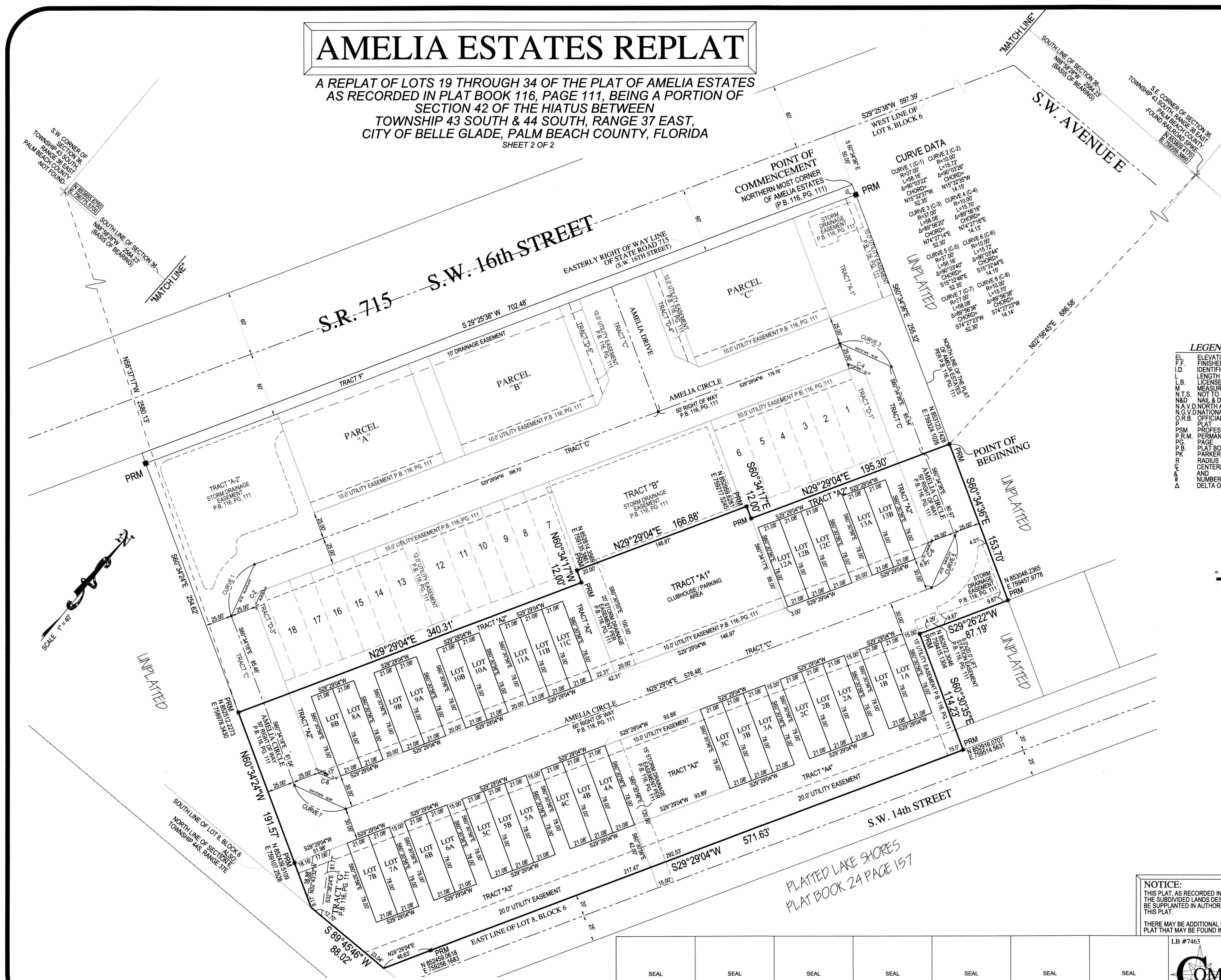


AMELIA ESTATES REPLAT

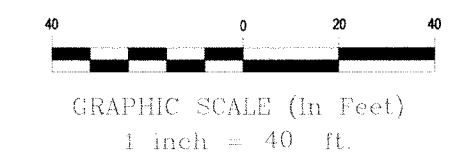
A REPLAT OF LOTS 19 THROUGH 34 OF THE PLAT OF AMELIA ESTATES AS RECORDED IN PLAT BOOK 116, PAGE 111, BEING A PORTION OF SECTION 42 OF THE HIATUS BETWEEN TOWNSHIP 43 SOUTH & 44 SOUTH, RANGE 37 EAST, CITY OF BELLE GLADE, PALM BEACH COUNTY, FLORIDA
SHEET 2 OF 2

36

COUNTY OF PALM BEACH
STATE OF FLORIDA
THIS PLAT WAS FILED FOR RECORD AT ____ M.
THIS ____ DAY OF ____
A.D. 2020 AND DULY RECORDED IN PLAT BOOK
ON PAGES ____ THRU ____
SHARON R. BOCK
CLERK AND COMPTROLLER
BY: _____ D.C.



- LEGEND**
- EL ELEVATION
 - F.F. FINISHED FLOOR
 - I.D. IDENTIFICATION
 - L.B. LICENSED BUSINESS
 - L. LENGTH
 - M. MEASURED
 - N.T.S. NOT TO SCALE
 - N&D NAIL & DISC
 - N.A.V.D. NORTH AMERICAN VERTICAL DATUM
 - N.G.V.D. NATIONAL GEODETIC VERTICAL DATUM
 - O.R.B. OFFICIAL RECORDS BOOK
 - P. PLAT
 - PSM PROFESSIONAL SURVEYOR AND MAPPER
 - P.R.M. PERMANENT REFERENCE MONUMENT
 - PG. PAGE
 - P.B. PLAT BOOK
 - P.K. PARKER KYLON NAIL
 - R. RADIUS
 - C. CENTERLINE
 - A.N. AND NUMBER
 - Δ DELTA OR CENTRAL ANGLE



NOTICE:
THIS PLAT, AS RECORDED IN ITS GRAPHIC FORM, IS THE OFFICIAL DEPICTION OF THE SUBDIVIDED LANDS DESCRIBED HEREIN AND WILL, IN NO CIRCUMSTANCES, BE SUPPLANTED IN AUTHORITY BY ANY OTHER GRAPHIC OR DIGITAL FORM OF THIS PLAT.
THERE MAY BE ADDITIONAL RESTRICTIONS THAT ARE NOT RECORDED ON THIS PLAT THAT MAY BE FOUND IN THE PUBLIC RECORDS OF THIS COUNTY.

SEAL SEAL SEAL SEAL SEAL SEAL SEAL

COMPASS SURVEYING
WWW.COMPASSSURVEYING.NET
6250 N. MILITARY TRAIL, SUITE 102
WEST PALM BEACH, FL 33407
PHONE (561) 640-4800
FACSIMILE (561) 640-0576